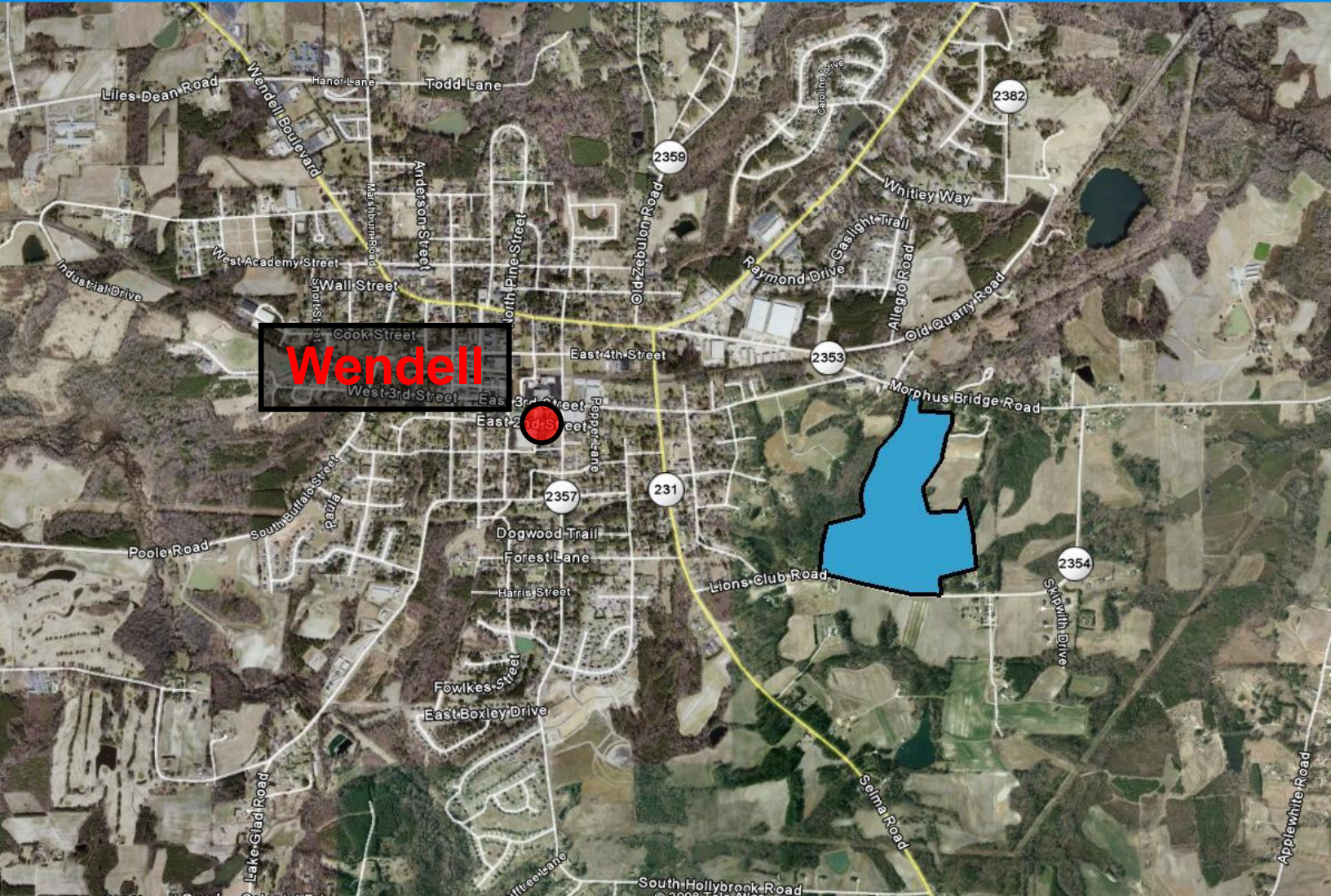




## Wendell, NC 29.21 Acres

<b>Location:</b>	On Morphus Bridge Road Wendell, North Carolina, 20 miles east of Downtown Raleigh.
<b>Size:</b>	Morphus Bridge Road Tract (North): 29.21 Acres Additional 33.66 Acre Tract Available on Lion's Club Road
<b>Zoning:</b>	R-10CU
<b>Utilities:</b>	All utilities available if both tracts are purchased.
<b>Price:</b>	Morphus Bridge Road Tract (North): \$861,695 (< \$10k/paper unit)





**CAMPBELL**  
PROPERTY GROUP, INC.  
*commercial real estate from a higher perspective*

8310 Bandford Way  
Suite 100  
Raleigh, NC 27615  
919-828-0092  
919-882-9523 Fax

## Summary:

- **29+ Acres Zoned for Single Family in Rapidly Growing East Wake Co.**
- **Zoning Allows a minimum of 4 units/acre. (Past layout yielded 3+/-acre)**
- **Utilities in place**
- **20 miles east of Downtown Raleigh**
- **Convenient to US 264 and Interstate 540**
- **Zoned for R10 Residential**
- **Owner will consider delivering developed lots**
- **Additional 33.66 Acres available on Adjacent Tract**



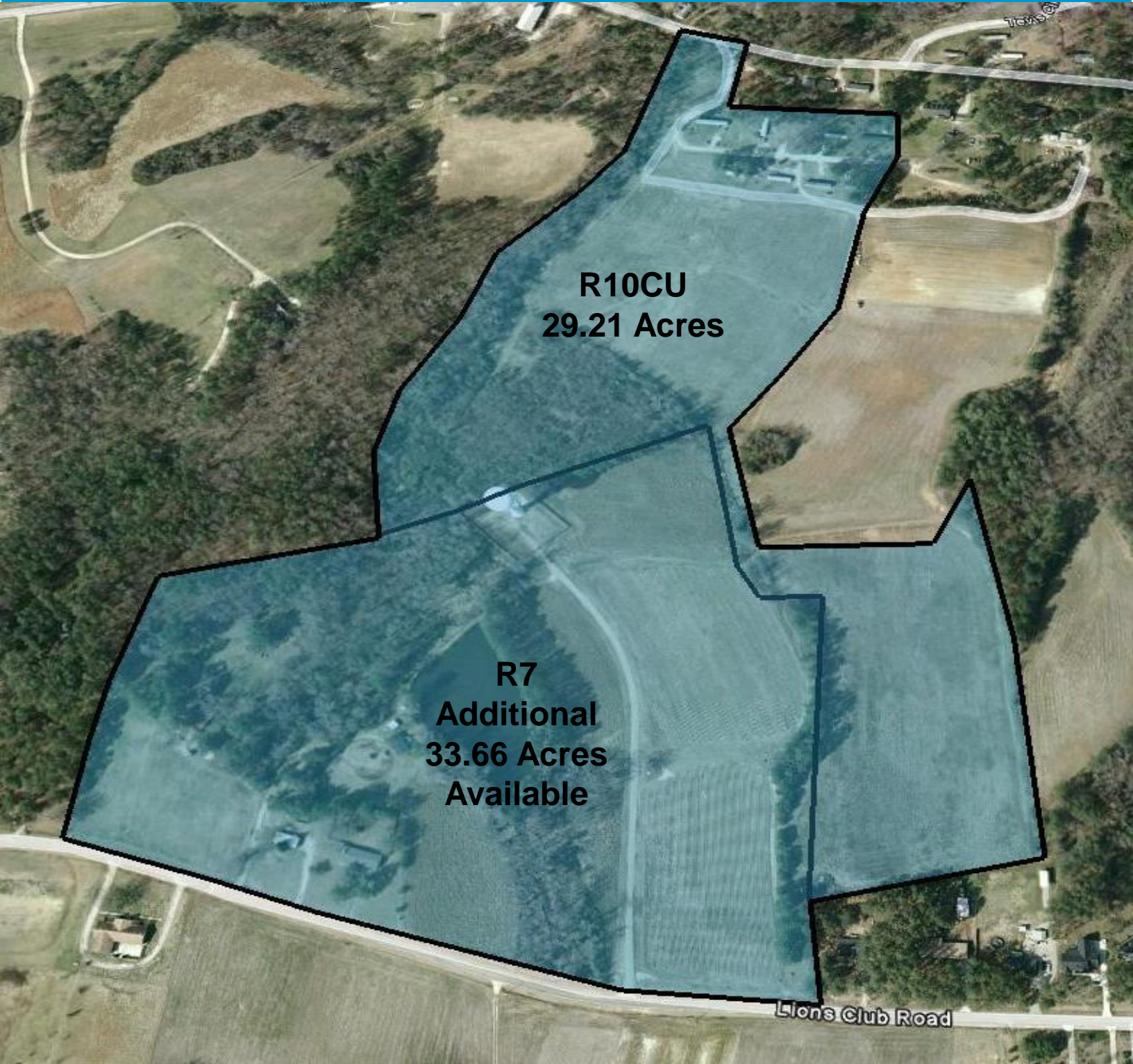


**CAMPBELL**  
PROPERTY GROUP, INC.

*commercial real estate from a higher perspective*

8310 Bandford Way  
Suite 100  
Raleigh, NC 27615  
919-828-0092  
919-882-9523 Fax

**Aerial Map - Morphus Bridge Road 29.21 Acres in Wendell, NC**

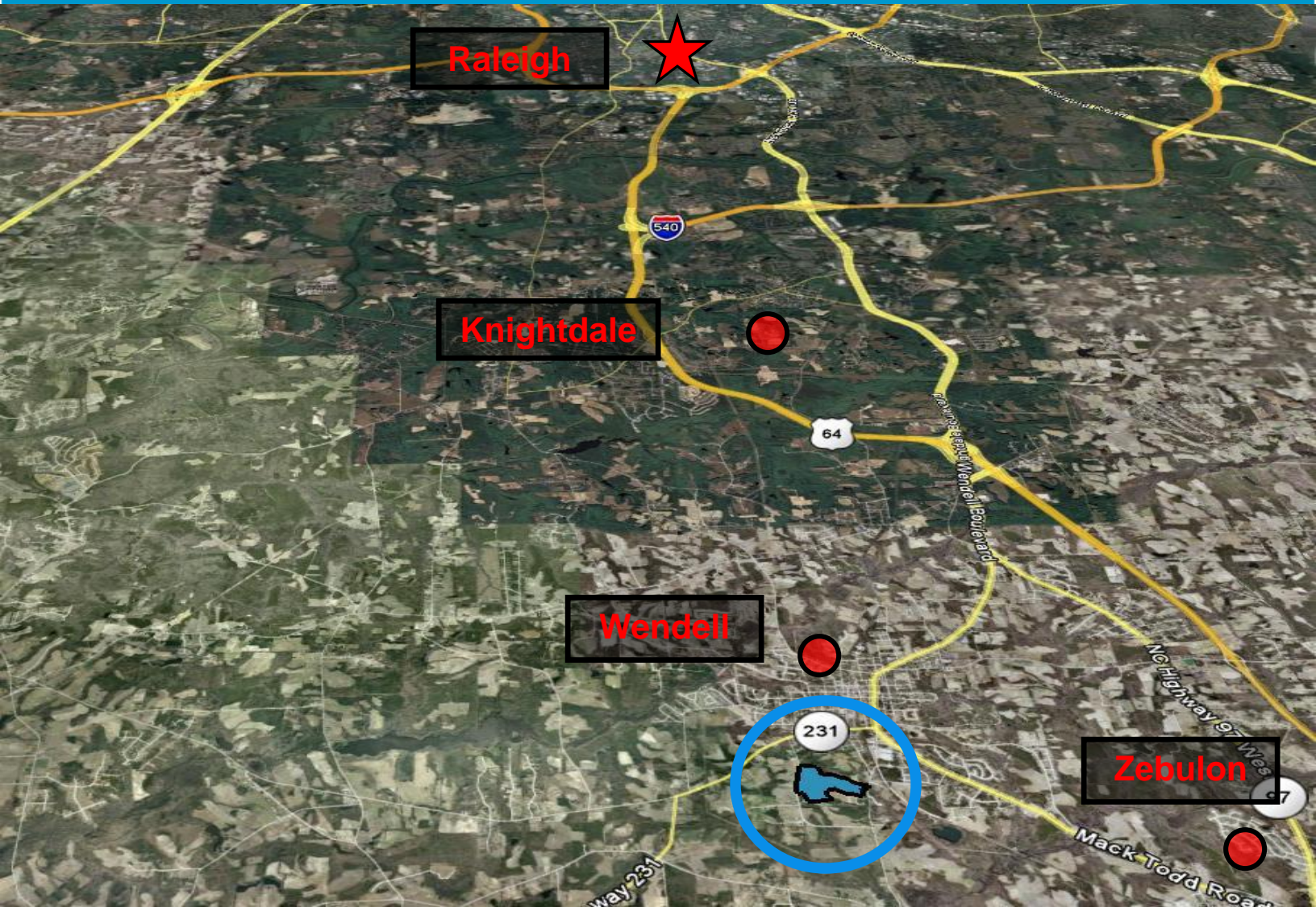




**CAMPBELL**  
PROPERTY GROUP, INC.  
*commercial real estate from a higher perspective*

8310 Bandford Way  
Suite 100  
Raleigh, NC 27615  
919-828-0092  
919-882-9523 Fax

## Convenient to Major Roads



### For More Information Contact:

McQueen Campbell  
8310 Bandford Way  
Raleigh, NC 27615

Owner/Broker – (919) 880-8632 cell  
[mcampbell@flycpg.com](mailto:mcampbell@flycpg.com)

Campbell Property Group, Inc.  
(919) 828-0092